

South Central Public Health Training Center

Tulane University School of Public Health and Tropical Medicine

University of Alabama at Birmingham School of Public Health



Overview

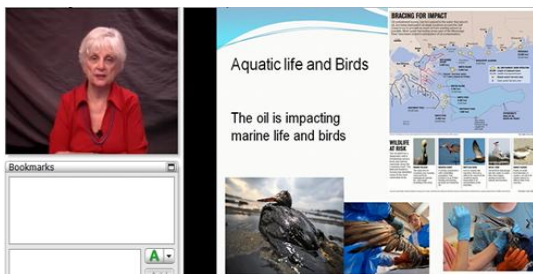
The specific purpose of the SCPHTC is to strengthen the technical, managerial, and leadership competence of the current public health workforce and to advance the knowledge and skills of the future public health workforce. The target audience consists of practicing public health professionals in state/local health agencies in Alabama, Louisiana and Mississippi. The Center also addresses the training needs of public health practitioners nationwide.

Training topic areas center on competency-based, practice-focused courses addressing core functions and essential services; all trainings are based on formal training needs assessments in the south central region. Key activities of the Center include development and delivery of courses on-site or through a variety of distance delivery modalities; needs assessments that inform the choices of training topics; and an extensive evaluation program for both curricula and the Center as a whole. An Advisory Board of leaders from the agencies and participating universities (Tulane and UAB SPH) supports the Center's programs.

Key Activities

- Hispanics in Florida believe the most important health problems are Diabetes, STI, high blood pressure, and teen pregnancy.
- Main PH issues in Puerto Rico are Healthcare Reform, Cardiovascular Diseases, Cancer, Asthma, Diabetes and the elderly population.
- The PR-F PHTC is the first PHTC to address the public health training needs of Hispanics in both Puerto Rico and Florida.
- The PR-F PHTC website is under continuous development by the Office of Informatics and Educational Resources of the UPR School of Health Professions. The Blackboard platform will be used for online courses. The website was fully uploaded on February 1, 2011.

Public Health in Action

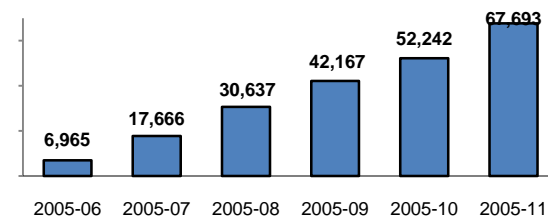


Above photo illustrates one of the courses offered in the SCPHTC Learning Management System.

Impact on Public Health Workforce

- The training programs developed by the South Central PHTC reflect current topics and changing needs within the region and nation. For example, due to the impact of the Gulf of Mexico Oil Spill on state and local partners, the Center provided just-in-time training to public health workers in Alabama, Louisiana and Mississippi. The Center is currently developing additional trainings related to the environmental and public health impact of the oil spill.
- In 2010, the SCPHTC initiated new collaborations with three other HRSA funded programs: the Maternal and Child Health Leadership and Education Training Programs (MCHLETP) at Tulane and UAB to identify course bundles in management, leadership, and communications; the Louisiana Primary Care Association to create courses on population-based training for primary care clinicians; and the Preventive Medicine Residency Program for Tulane medical residents.
- The SCPHTC has worked closely with state and local partners to provide field placement (internships) opportunities in Medically Underserved Areas (MUAs) for graduate level public health students.
- The South Central PHTC utilizes a Learning Management System for web-based course delivery and a state-of-the-art satellite broadcast system to reach both urban and rural public health workers. Courses are delivered in short segments, allowing participants to make regular progress with little time invested each day. Evaluations have demonstrated consistently high marks from participants with respect to content, instructor effectiveness, and the distant learning format.
- Number of Trainings: 72 (All accessible via online learning)
- Number of People Trained: 67,693

Table 1



Key Partners

- Alabama Department of Public Health
- Jefferson County Department of Health
- Louisiana Office of Public Health
- LSU Health Sciences Center
- Mississippi State Department of Health
- Mobile County Health Department
- City of New Orleans Health Department
- Tulane University School of Public Health & Tropical Medicine
- University of Alabama at Birmingham School of Public Health

Leadership

Principal Investigator: LuAnn E. White, PhD, DABT

Co-Principal Investigators: Ann C. Anderson, PhD
Lisa McCormick, DrPH

South Central Public Health Training Center

1440 Canal Street, Suite 2430, New Orleans, LA 70112
504.988.5397

lawhite@tulane.edu

<http://www.southcentralpartnership.org/trainingcenter>

HRSA Public Health Training Centers

The Health Resources and Services Administration funded Public Health Training Centers (PHTC) are partnerships between accredited schools of public health, related academic institutions, and public health agencies and organizations. The PHTC Network improves the Nation's public health system by strengthening the technical, scientific, managerial, and leadership competence of current and future public health professionals. Public Health Training Centers assess the learning needs of the public health workforce, provide accessible training, and work with organizations to meet other strategic planning, education, and resource needs.



[PHTC Maps](#)

[List of Public Health Training Centers](#)

<p><u>Arizona</u> Arizona PHTC</p> <p><u>California</u> California-Nevada PHTC California Pacific PHTC Southwest Regional PHTC</p> <p><u>Colorado</u> Colorado PHTC</p> <p><u>Florida</u> Florida PHTC</p> <p><u>Georgia</u> Emory PHTC Georgia PHTC</p> <p><u>Illinois</u> Mid-America PHTC</p> <p><u>Indiana</u> Indiana PHTC</p> <p><u>Iowa</u> Upper Midwest PHTC</p> <p><u>Kentucky</u> Kentucky & Appalachia PHTC</p> <p><u>Louisiana</u> South Central PHTC</p>	<p><u>Maryland</u> MidAtlantic PHTC</p> <p><u>Massachusetts</u> New England Alliance for PH Workforce Development</p> <p><u>Michigan</u> Michigan PHTC</p> <p><u>Minnesota</u> Midwest Center for Life-Long- Learning in Public Health</p> <p><u>Missouri</u> Heartland Public Health Education and Training Center</p> <p><u>New Hampshire</u> New Hampshire PHTC</p> <p><u>New Jersey</u> New Jersey PHTC</p> <p><u>New York</u> Empire State PHTC New York-New Jersey PHTC</p> <p><u>North Carolina</u> Southeast PHTC</p>	<p><u>Ohio</u> Ohio PHTC</p> <p><u>Oklahoma</u> Oklahoma PHTC</p> <p><u>Pennsylvania</u> Pennsylvania PHTC</p> <p><u>Puerto Rico</u> Puerto Rico-Florida PHTC</p> <p><u>South Carolina</u> South Carolina PHTC</p> <p><u>Tennessee</u> LIFEPATH Tennessee PHTC</p> <p><u>Texas</u> Texas PHTC</p> <p><u>Virginia</u> Commonwealth PHTC</p> <p><u>Washington</u> Northwest PHTC</p> <p><u>Wisconsin</u> Wisconsin Center for Public Health Education and Training</p>
--	--	--

Published August 2011

<http://www.publichealthtrainingcenters.org/>

